

Aluminum Windows and Doors

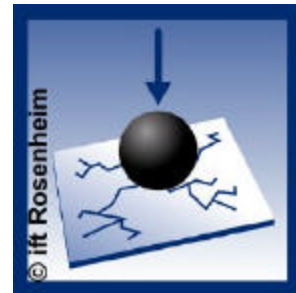


Bronze anodized aluminum door system 90

Key Elements of Quality Aluminum Window and Doors



Longevity



Hurricane Protection



Sound Insulation



Air Permissibility



Intrusion Protection



Thermal Insulation



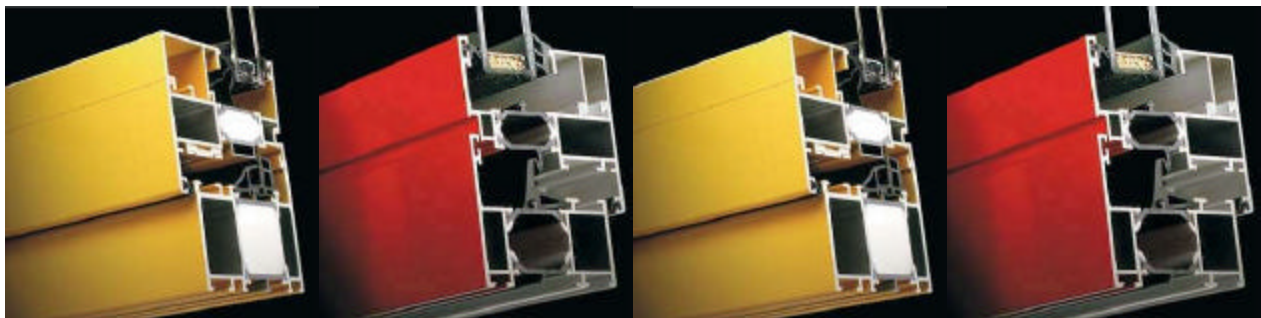
Weather Barrier



Fire Protection

Variety in design applications: the system numeration coincides with the frames depth.

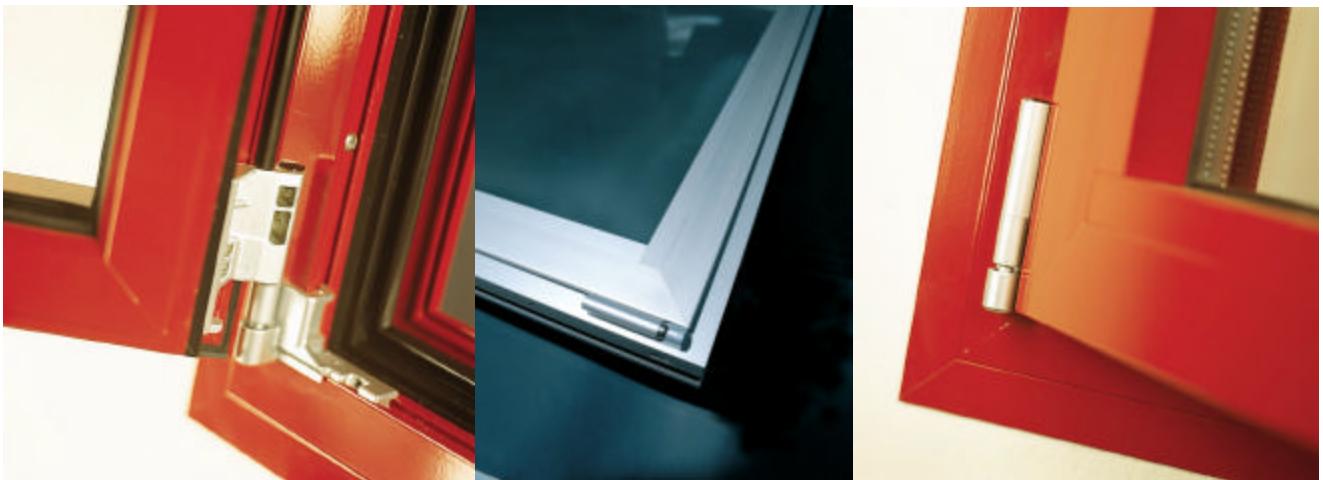
- ?? Tilt & Turn Window and Door System 65
- ?? Lift & Slide doors System 70, available up to 40' wide!
- ?? Tilt & Slide Doors
- ?? Entrance Doors System 90,





If the design of your project requires aluminum frames, our Aluminum Systems 65, 70 and 90 are the answer. The multi-chambered extrusion is ideal for insulation as the thermal brake prevents heat/cold transfer through the metal. The frames can be anodized to 10 different shades or powder coated to any RAL color. Each window/door is custom made to your exact specification. If you can't find a design to your liking from the samples at the end of this brochure, please take a pencil and draw the window/ door of your dream. If it is technically possible, we can build it!

Quality in the Detail



Historical Restoration



M
O
D
E
R
N

A
R
C
H
I
T
E
C
T
U
R
E



Professional Series 065

▶ Professional Series 065 heat-insulated

Windows and doors

System construction depth 65/75 mm

▶ Windows:

▶ Classification: $U_f = 2,6 \text{ W}/(\text{m}^2 \times \text{K})$
corresponds to RMG 2.1

▶ Stress group: C

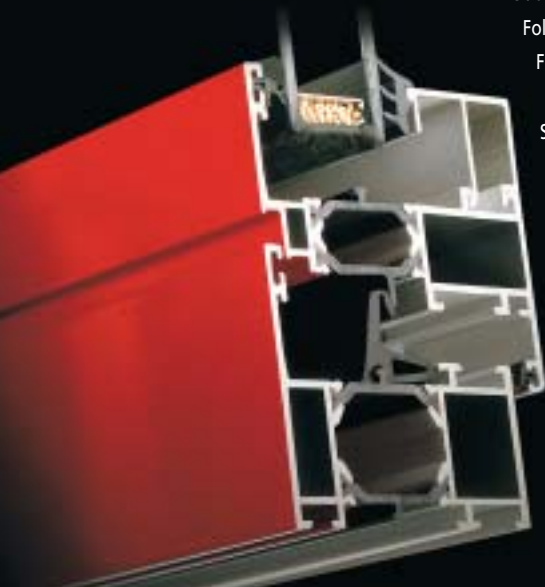
▶ Installation height: up to 100 m

▶ Burglar retardation: EF 1 + 2, ET 1 + 2

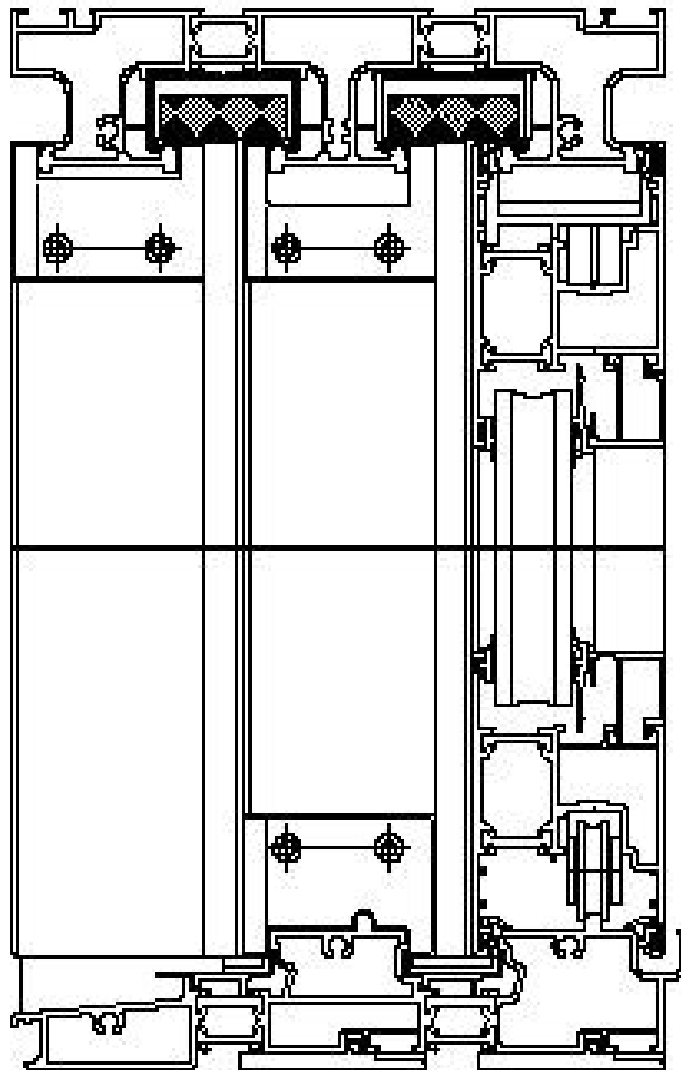
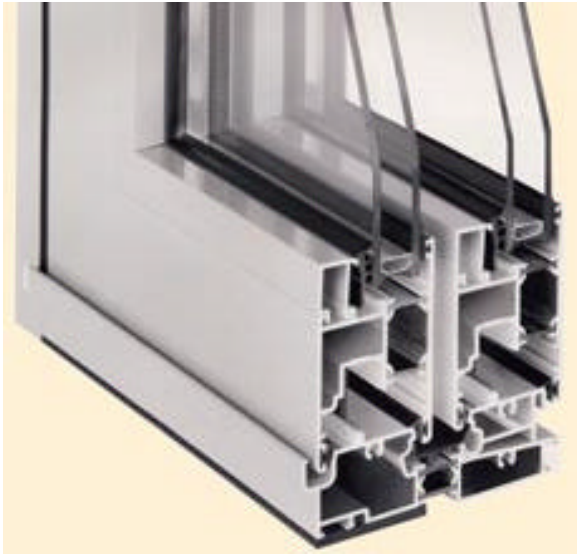
▶ Sound insulation: up to class 5

Opening types

- Turn windows
- Tilt and turn windows
- Tilt windows
- Lock case front windows
- French windows
- Parallel sliding-tilting doors
- Delay control doors
- Balcony door with a flat threshold (disabled-friendly)
- Outward opening windows
- Folding-sliding windows
- Folding-sliding doors
- Hinged doors
- Semi-swinging doors
- Push-pull doors
- Finger protection doors
- Automatic doors

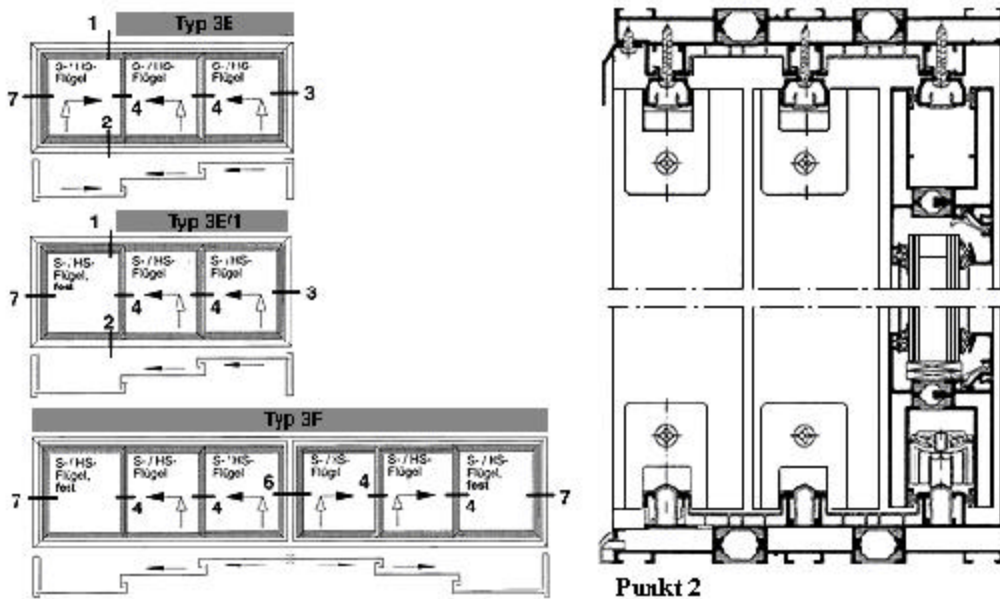
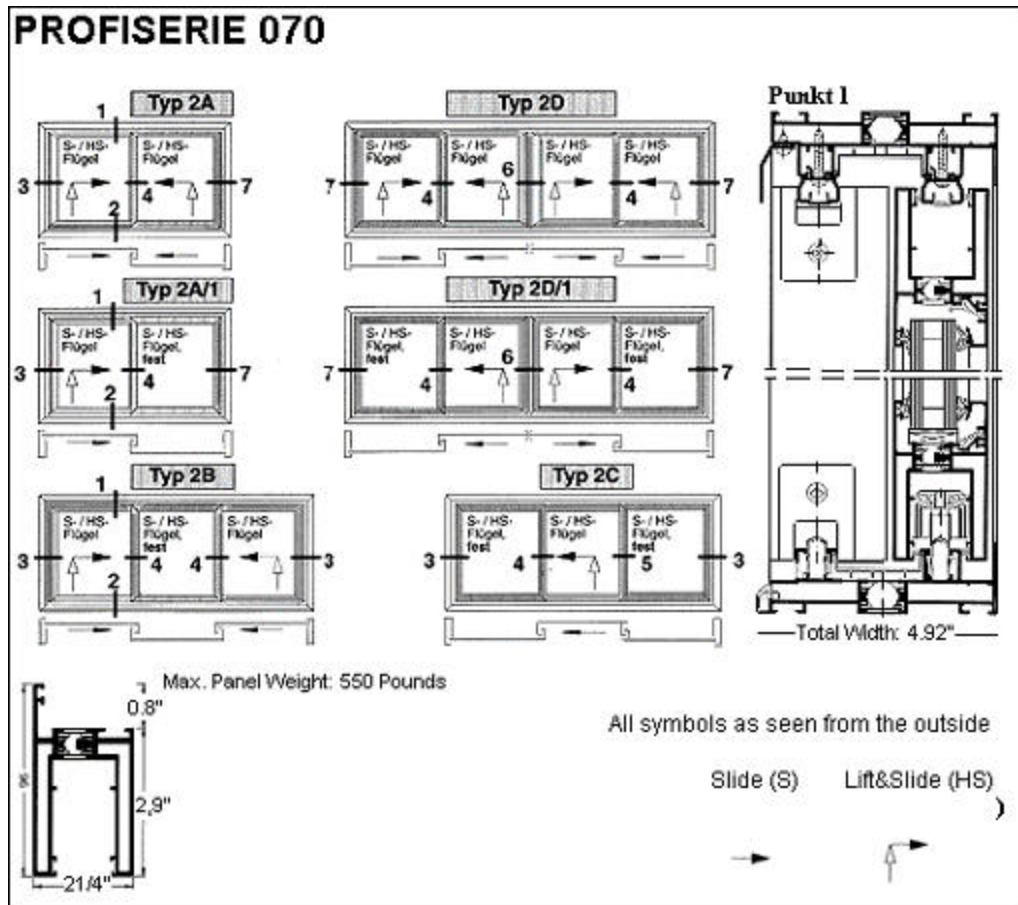


Lift and Slide Doors System 70



Zeichnung verkleinert

Configuration for widths of up to 40 feet:



Please call us for Cad drawings

Professional Series 070

▶ **Professional Series 070 heat-insulated**

Lifting-sliding doors

System construction depth 125/193 mm

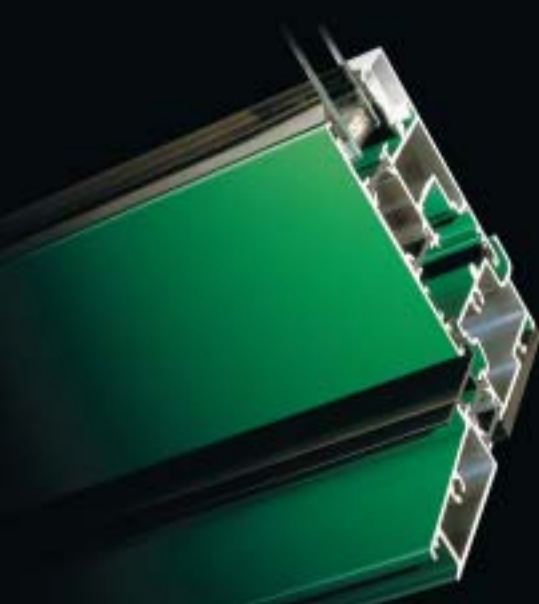
- ▶ Stress group: A
- ▶ Installation height: up to 8 m
- ▶ Burglar retardation: WK-2

Opening types

Lifting-sliding doors

2-track

3-track



Entrance Door System 90



Options:

- ?? Multi-Point Locking Mechanism and/or Motorized Locks
- ?? Hydraulic Door Closing systems, built-in or external
- ?? Motorized Door opener/closer
- ?? Anodized or Powder Coated to any RAL color
- ?? Security levels from Burglarproof (Hurricane Resistant) to Bullet Resistant
- ?? Can be combined with our window system 65 and/or our Vario Curtain Wall System
- ?? Motorized function can be fully integrated into an existing Home Automation System



Single Entrance Doors:

If you can give us a sketch on how your door should look like, we can build it!



Professional Series 090

▶ Professional Series 090 heat-insulated Doors

- ▶ System construction depth: 82 mm
- ▶ Burglard retardation: ET 1 + 2
- ▶ Stress group: A up to 8 m
- ▶ Sound insulation: up to class 3

Opening types

- Front doors
- French windows
- Hinged doors
- Delay control doors
- Turn windows
- Tilt and turn windows
- Tilt windows
- Fixed panels



Professional Series 090 Softline

▶ Professional Series 090 Softline

Doors

- ▶ System construction depth: 82 mm
- ▶ Burglar retardation: WK2
- ▶ Stress group: A up to 8 m
- ▶ Sound insulation: up to class 3

Opening types

- Front doors
- French windows
- Hinged doors
(opening inward)
- Delay control doors
- Turn windows
- Tilt and turn windows
- Tilt windows
- Fixed panels

